



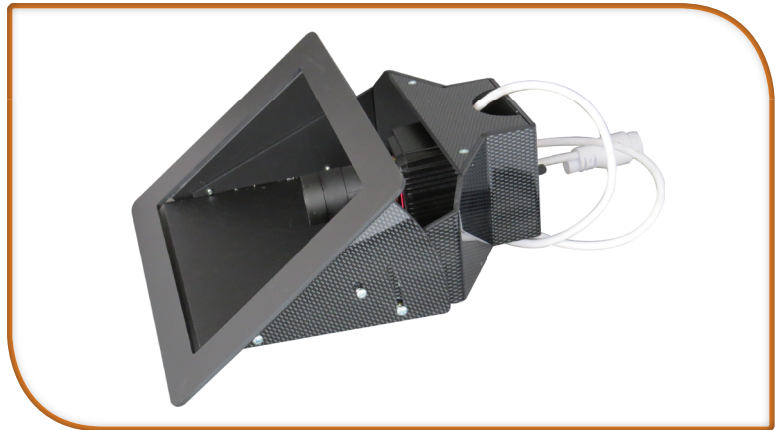
Product Datasheet

Part Code: ANPR-IPC-4K-Z-FF

4K Ultra HD Front Facing ANPR Camera

Key Features

- 4K Ultra-HD 12 Mega Pixel IP Camera
- 4~10mm and 12~50mm Motorized Mega Pixel Zoom Lens options
- Software controlled motorized IR cut filter
- Mounting via screen angle-adjustable carbon-effect ABS housing with anti-reflection shield
- IP54 (International Protection Rating)
- Ultra-high definition 4000 x 3000 resolution
- H.264, H.265 & MJPEG video streaming
- ONVIF and RTSP compliant



Specifications

Camera	Image Sensor	Sony Exmor 12.4Mega Pixels Image Sensor
	Max. Resolution	4168(H) x 3062(V), 12.76 Mega Pixels
	Min. Illustration	Color : 0.15 Lux at 50IRE / 30FPS B/W : 0.09 Lux, at 50IRE / 30FPS
	LENS	4~10mm and 12~50mm Mega Pixel Motorised Zoom Lens options
	Electronic Shutter Speed	Automatic: Min. 1/135,000 sec ~ Max. 1/60 sec Manual: Min. 1/10,000 sec ~ Max. 1/10 sec
	Auto Exposure Mode	Automatic (Priority: Frame rate/Low noise), Manual
	White Balance	ATW-Indoor/Outdoor, Shade, Clear sky, Fluorescent light, Light bulb, Flame, Manual
Mounting options	Deployment	Internal - Vehicle front windscreen
Network	Video Compression	H.265/H.264/MJPEG
	Video Resolution	4000x3000 /3000x3000 /3840x2160 /2560x1920 /2048x1536 /1600x1200 /1920x1080/1280x1024/1280x960/640x480/640x36 /320x240/320x180
	Video Frame Rate	15fps @all resolution
	Video Streaming	Tripl Stream (Stream1,2,3) RTP/RTSP, UnicastRTP, Multicast RTP
	Protocols	TCP/IP, UDP, IPv4/v6, HTTP, HTTPS, FTP, UPnP, RTP, RTSP, RTCP, DHCP, ARP, Zeroconf
	Max. User Connection	10 Users
	SDK Support	API, ONVIF V2.4
	Ethernet Tx/Rx	RJ-45(10/100Base-T)
	Operating Humidity	0~90% (non-condensing)
	Operating Temperature	-10°C~ +50°C
Input Voltage	DC12V / PoE-802.3 af(option)	
Power Consumption	650mA(MAX)	