



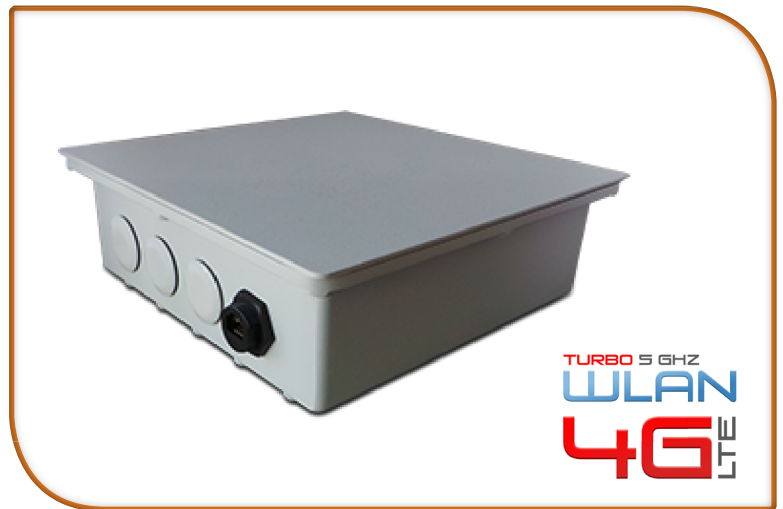
Product Datasheet

Part Code: WIMS-AP-IP65

IP66 WIMS Access Point - Depot / Garage
WLAN / 3G Module Wireless Intelligent Monitoring System

Key Features

- IP66 Rated enclosure
- Zero Config
- Ultra Secure P2P VPN Technology protects 3G / CDMA / WLAN and LAN to (AES-256) Mil-Spec standards
- Built on Embedded Linux OS for robustness and reliability
- 4GB Solid state compact flash memory
- Remote Health Checking of Depot WLAN System via GPRS / 3G and ADSL
- Supports fixed IP addressing via DHCP sim cards
- PUSH Diagnostics / Alerts and Exception Reporting direct to your Maintenance Provider
- Embedded Linux Remote Agent syncs information to a Headend Server to give instant Fault Visibility and Reporting
- Supports Full Video Management including Playback / Preview and Backup via GPRS / 3G and WLAN
- Integrated Video Backup to a Secure Web-Based Video Vault with Video Sharing Feature for Evidence Distribution



Specifications

Additional Features	Simple access to WIMS set up management interface via Secure Web-Portal using any Browser
	Supports Health Checking to other Legacy CCTV Systems**
	Supports Wake-on-LAN
	Supports all cellular technologies
	Supports both 2.4 and 5 GHz WLAN networks
	Full Mesh Networking acts as a repeater / mesh / booster in a multi device network
Physical Dimensions: W x D x H	220mm x 220mm x 85mm



Product Datasheet

WIMS Access Point - Depot / Garage

Specifications.....continued

Wireless Modules	Enterprise Class Wireless LAN - via Mini PCI	802.11a/b/g (up to 108Mbps) - Supports all 2.4 & 5GHz WLAN
		Up to 4 Watts Transmit Power - External Range up to +500m (5 GHz)
		Advanced WLAN Security - WEP WPA AES, WPA2 (IEEE 802.11i), (IEEE 802.1x Authentication)
		Additional support for 802.11 d, h, i, j including Multi-Country Roaming
		DFS/TPC: Dynamic Frequency Selection/Transmit Power Control for 5 GHz Mobile Fleet Operation in Ground Radar Areas like airports
		Support for 802.11e, the QOS Standard for Wireless Multimedia Enhancements
	Mobile - via Mini PCI	Support for Third Generation (3G) - Digital Cellular Standards Compliant
		Global Support for Quad-Band EDGE / GPRS / GSM / CDMA - 850/900/1800/1900 Mhz
		Supports Tri-Band UMTS / 4G / LTE
		Peak Download Speed up to 7.2 Mbps*
		Peak Upload Speed up to 2.0 Mbps*
		Supports Dual Antenna Diversity for Improved Performance
Data / Failure Monitoring Options	TCP/IP Network Serial Bus, WLAN 5 GHz HDD, WLAN 2.4 GHz Processor Health, USB Devices, Remote, Workstations, Managed HUB / ADSL routers - Via push diagnostics engine to cloud based condition monitoring and alerting server - (VidimonIQ)	
Main PCB Specification	Operating System Custom Embedded Linux	
	CPU 500Mhz AMD Geode LX800 DRAM 256Mb DDR DRAM	
	Storage 4Gb SLC Compact Flash OS and Samba	
	Power DC Jack or Passive POE, 7VDC to 20VDC	
	Connectivity 2 Ethernet Channels (via VT6105M 10/ 100)	
	I/O DB9 Serial Port, Dual USB port	
	Supports POE via Vidiwave bespoke Injector	
Built-in VPN Technology	AES-256 (Advanced Encryption Standard) compliant on all communications. (Cellular, LAN, WAN, WLAN)	
	AES-256 runs 14 simultaneous cycles for 256-Bit keys, delivering the highest standard of network data encryption currently available	
	AES-256 is the encryption standard adopted by the US government	
	AES-256 fully complies with the ISO/IEC 18033-3 standard	
	AES-256 is used by NSA and other security agencies worldwide with "Top Secret" encryption requirements	
	Peer-to-peer direct connection technology for increased speed and security	
	VPN Supports RDP / VNC / Telnet / SSH / FTP / SFTP and WOL over 3G + WLAN	

* Network provider dependant